

### Description

The FIREKILL™ Model HS56-90 is a high-speed water spray nozzle which delivers a full cone spray of water from the nozzle in an angle of  $90^\circ \pm 5\%$ . The nozzles functions with a water pressures of 2-6 bar making it possible to utilize the nozzles in very harsh wind conditions.

Model HS56-90 Nozzles have a K-factor of  $56.0 \pm 5\%$  (liter/minute/ $\sqrt{\text{bar}}$ ).

Model HS56-90 High Speed Nozzles are available with 1" NPT male connections. Other connection upon request.

All internal water ways have diameters larger than 3mm. Nozzles should only be utilized in pipe systems with clean internal pipe surfaces and cavities. Nozzles should be installed in systems with a main-line water strainer with mesh size equal to or less than 3mm.

### Applications

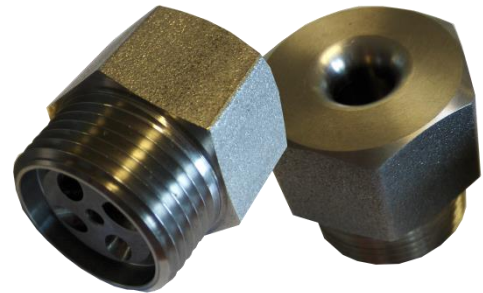
The Model HS56-90 nozzle is designed for fire protection of car deck on ferries where the area is enclosed or open in one or both ends in accordance with MSC.1/Circ.1430/Rev.1 REVISED GUIDELINES FOR THE DESIGN AND APPROVAL OF FIXED WATER-BASED FIRE-FIGHTING SYSTEMS FOR RO-RO SPACES AND SPECIAL CATEGORY SPACES, Section 4 Additional prescriptive-based system design requirements.

### Approvals

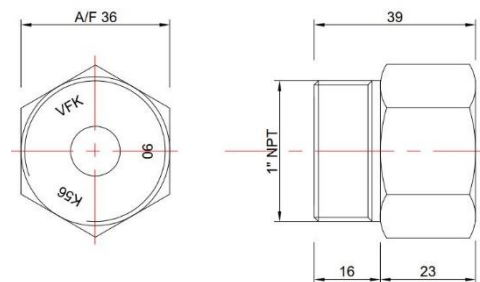
The Model HS56-90 is component tested in accordance with IMO MSC Circ 1165 and holding DnV MED-B Approval.

### Technical data

General Description			
Approved water pressure	2-6 bar		
Spray Angle	$90^\circ \pm 5\%$ .		
K-value	$56.0 \pm 5\%$ (l/min/ $\sqrt{\text{bar}}$ )		
Connections	1" NPT male		
Material			
Standard	Naval Brass*	CuZn35Ni	0,20 Kg
Optional. Minimum qty may apply.	Stainless Steel	AISI 316	0,18 Kg
	Titanium	Grade 2	0,12 Kg
	Super Duplex	25Cr	



### Dimension



\*Naval brass with DnV Approval

**NOTE: Minimum quantity may apply when ordering products with optional material and connections such as BSP or BSPT.**

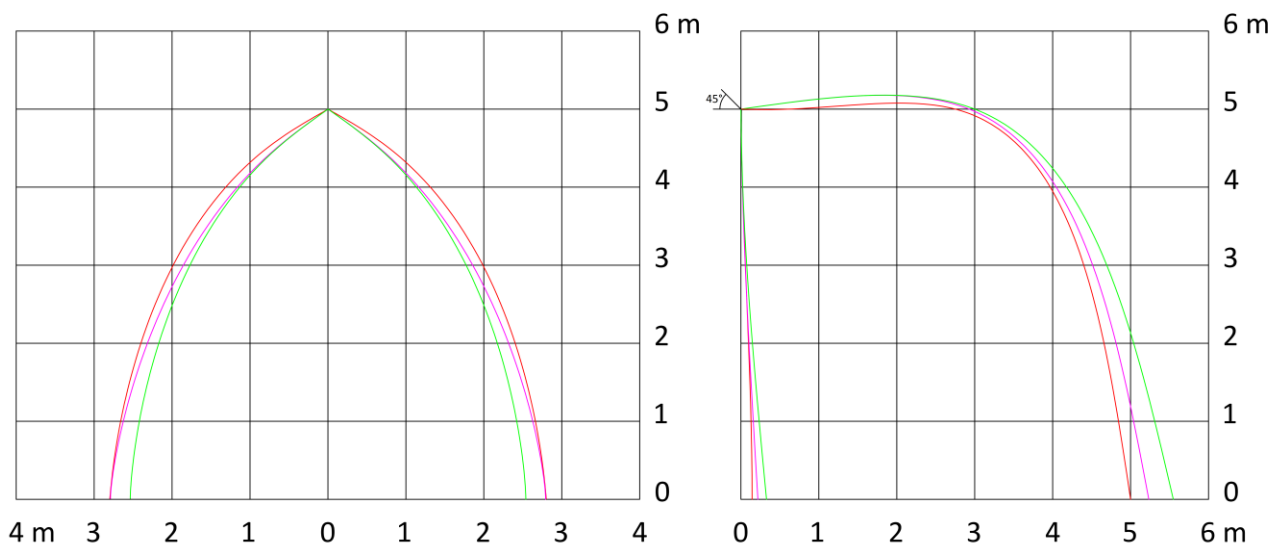
## Installation

The nozzles should be positioned in such a way that:

1. they are not exposed to damage by cargo;
2. undisturbed spray is ensured; and
3. water is distributed over and between all vehicles or cargo in the area being protected.

Piping should be flushed prior to installation of the nozzles. The nozzles can be used for both fresh water and sea water applications.

## Spray pattern at 2-6



Red: 2 Bar  
Purple: 3.5 bar  
Green: 6 bar

## Contact

For further information on FIREKILL™ products, please contact our sales department at [Sales@vidfirekill.com](mailto:Sales@vidfirekill.com)

VID Fire-Kill APS is not responsible for any errors or omissions, or for the results obtained from the use of this information. All information in this document is provided "as is", with no guarantee of completeness, accuracy, functionality, timeliness or of the results obtained from the use of this information.