

Description

The **FIREKILL™** Model OH-CP is to be used when there is a requirement to have a painted finish on the entire nozzle. It is robust and easy to install on the nozzle house when the nozzle is installed in an open pipe solution. The cover pipe is fixed to the nozzle through its internal threading.

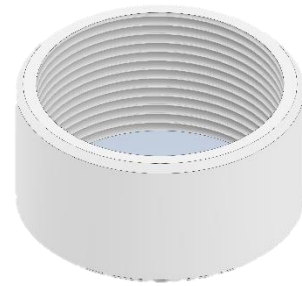
The Model OH-CP is made in brass. It can be supplied in chrome finish or powder coated with any RAL Color finish. This allows the nozzle to easily blend into the surroundings.

Design and Installation

The cover pipe is to be fixed to the nozzle by use of its internal thread, which ensures, that the cover pipe has the correct distance from the Model OH-nozzles cover-plate.

The Model OH-CP has been designed specifically for the Model OH-nozzles and should therefore not be used in protecting or covering nozzles not found in the Model OH-ranges.

NOTE: The top of the nozzle house, i.e. the surface below the bulb and the clips for the bulb is not painted.



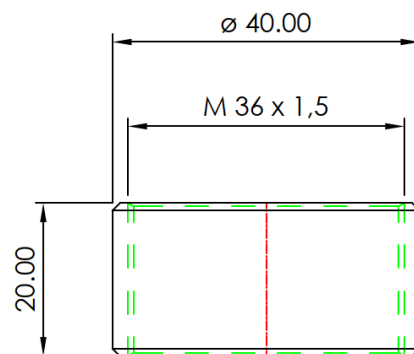
OH Nozzle with cover pipe



Technical data

General Description	
Material	Brass
Weight	0,036 Kg
Standard finish	NiSn plating
Other finish	Powder coating
Related products	
Automatic nozzles	OH-Serie

Dimension



Contact

For further information on **FIREKILL™** products, please contact our sales department at Sales@vidfirekill.com

VID Fire-Kill APS is not responsible for any errors or omissions, or for the results obtained from the use of this information. All information in this document is provided "as is", with no guarantee of completeness, accuracy, functionality, timeliness or of the results obtained from the use of this information.