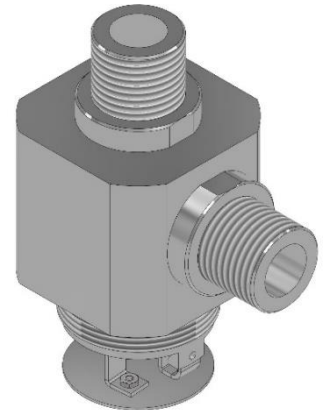


Description

The FIREKILL™ Low Pressure Water pilot valve OH-PILOT is an automatic, pendent low-pressure water mist valve ideal for installation where there are typically baffle ceilings. The OH-Pilot valve is used above the baffle ceiling with a flexible connection to an open OH nozzle installed in/below the baffle ceiling.

Approvals

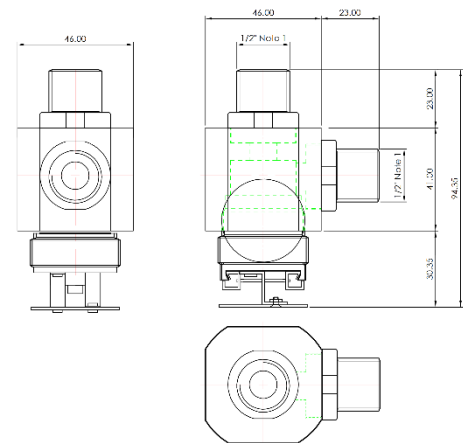
The FIREKILL™ OH-Pilot valve incorporates the same design as the OH Automatic nozzle series. All core components such as release mechanism have gone through component testing in accordance with both IMO and FM standards. In addition, the pressure drop through OH-Pilot valve has been tested in an ISO 17025 certified test laboratory.



Technical data

General Description	
Minimum water pressure	2 bar
Maximum working pressure	16 bar
Max. distance to bulb below ceiling	250 mm
Nominal release temperatures	57°C, 68°C, 79°C, 93°C
Time Response Index (metric)	RTI < 50 Fast Response Class
Specific Description	
Weight	0.78 kg
Housing	Brass
Coating	NiSn
Thread	½" BSP/BSP-T/NPT
Standard Finish	Chrome, White RAL 9010
Other Finish	Other RAL colors

Dimension



Installations

The FIREKILL™ OH-PILOT valves are installed above typically baffle ceilings and other type of open ceilings. The maximum distance between the OH-PILOT valves should be identical to the distance for the OH Nozzle it is serving. Typically, when used with OH-VSO the maximum distance should be 4,5 meter and used with typically OH-ACC100 it should be 3,50 meter.

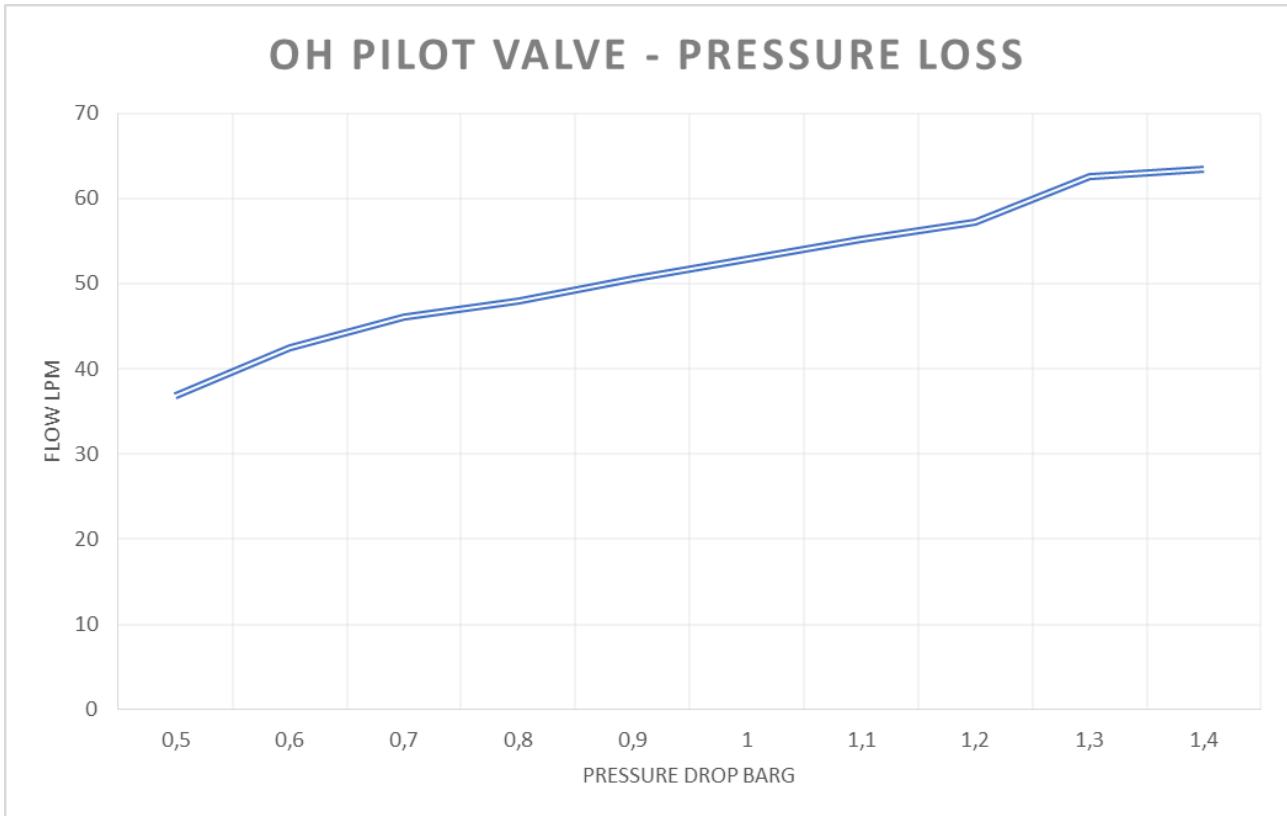
The FIREKILL™ OH-PILOT should only be installed in clean, non-corrosive pipe systems, which do not cause galvanic corrosion to the nozzle, the system components and pipe hangers, and with clean rinsed internal surfaces free of impurities. The water quality should be free of chlorides and impurities. The OH-PILOT is typically surface mounted into open pipe work. The system should be installed using materials found acceptable by the authorities having jurisdiction.

Caution

The FIREKILL™ OH-PILOT valve is a fragile component, containing a glass release element under pressure.

Dropped or otherwise damaged nozzles should not be reinstalled.

Flow curve



Pressure drop			
Flow lpm	Pressure drop BARG	Flow lpm	Pressure drop BARG
37,00 lpm	0,50 BARG	53,00 lpm	1,00 BARG
43,00 lpm	0,60 BARG	55,00 lpm	1,10 BARG
46,00 lpm	0,70 BARG	57,00 lpm	1,20 BARG
48,00 lpm	0,80 BARG	62,00 lpm	1,30 BARG
51,00 lpm	0,90 BARG	64,00 lpm	1,40 BARG

Contact

For further information on FIRE KILL™ products, please contact our sales department at Sales@vidfirekill.com

VID Fire-Kill APS is not responsible for any errors or omissions, or for the results obtained from the use of this information. All information in this document is provided "as is", with no guarantee of completeness, accuracy, functionality, timeliness or of the results obtained from the use of this information.