

Description

The FIREKILL™ Model MS80 is a directional spray nozzle and are designed for use in water spray fixed systems for fire protection applications. It is external deflector type nozzles that discharge a uniformly filled cone of medium velocity water droplets.

Model MS80 Nozzles have a K-factor of 80 (liter/minute/ $\sqrt{\text{bar}}$) and a working range from 1,5 bar to 4 bar.

Model MS80 Medium Velocity Spray Nozzles are available with 1/2" NPT male connections.

Nozzles should only be utilized in pipe systems with clean internal pipe surfaces and cavities. Nozzles should be installed in systems with a main-line water strainer with mesh size less than 3mm.



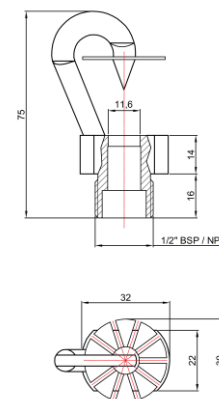
Applications

The Model MS80 nozzle is designed for fire protection and cooling of primarily tanks, building and structures against hydrocarbon fires. In addition, it has been tested in infrastructure road tunnels.

Technical data

| General Description | | | |
|-----------------------------|---|----------|----------|
| approved water pressure | 1,5-6 bar | | |
| Spray Angle | 180° (+5%-5%) | | |
| K-value | 80,0 +5% /-8% (l/min/ $\sqrt{\text{bar}}$) | | |
| Connection | 1/2" NPT male | | |
| Nozzle material | | | |
| Standard | Titanium* | Grade 2 | 0,056 Kg |
| | Naval Brass* | CuZn35Ni | 0,102 Kg |
| Options. Min. qty may apply | Stainless Steel | AISI 316 | 0,096 Kg |
| | Super Duplex | 25Cr | 0,096 Kg |
| Strainer material | | | |
| Standard | Stainless Steel* | AISI 316 | |
| Optional | Titanium* | Grade 2 | |

Dimension



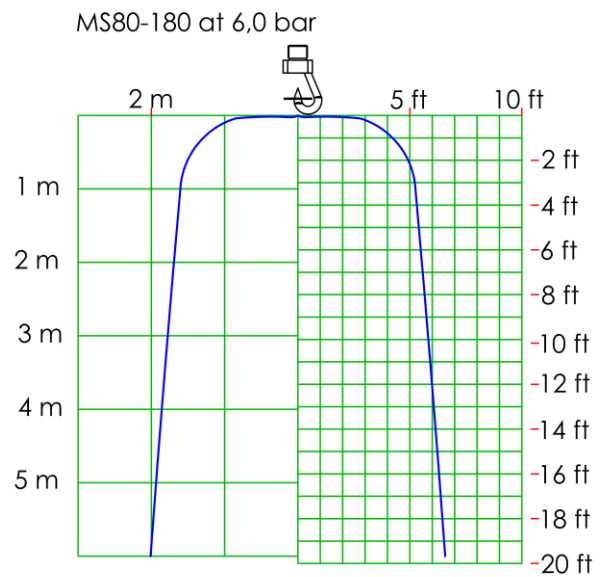
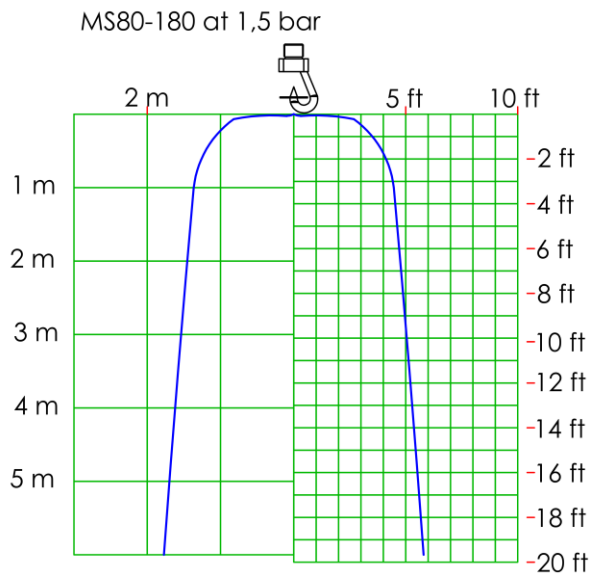
NOTE: Minimum quantity may apply when ordering products with optional material and connections such as BSP or BSPT

Installation

Where direct impingement of water spray onto all of the protected surface is required by the authority having jurisdiction, the nozzles are to be spaced and directed so that their spray patterns will completely cover the plane-of protection with the minimum required average density; however, it is recommended that indoor nozzle spacing be 3,7 m or less and that outdoor nozzle spacing be 3,0 m or less.

Piping should be flushed prior to installation of the nozzles. The nozzles can be used for both fresh water and sea water applications.

Spray pattern



Contact

For further information on FIREKILL™ products, please contact our sales department at Sales@vidfirekill.com

VID Fire-Kill APS is not responsible for any errors or omissions, or for the results obtained from the use of this information. All information in this document is provided "as is", with no guarantee of completeness, accuracy, functionality, timeliness or of the results obtained from the use of this information.