

Description

The FIREKILL™ Model MS40 is a medium velocity water spray nozzle which delivers a full cone spray of water from the nozzle in an angle of 90° or 120°. The nozzle functions with a water pressure of 2-4 bar making it possible to utilize the nozzles in very harsh wind conditions.

Model MS40 Nozzles have a K-factor of 40 (liter/minute/√bar).

Model MS40 Medium Velocity Spray Nozzles are available with ½" NPT male connections.

Model MS40 Medium Velocity Spray Nozzles are available with and without nozzle strainers. Nozzles should only be utilized in pipe systems with clean internal pipe surfaces and cavities. Nozzles should be installed in systems with a main-line water strainer with mesh size less than 3mm.

Applications

The Model MS40 nozzle is designed for fire protection and cooling of primarily tanks, building and structures against hydrocarbon fires.

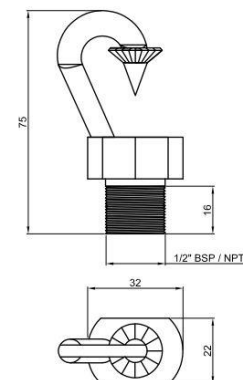
Approvals

The Model MS40 Titanium and Naval Brass nozzles are FM approved.

Technical data

General Description			
approved water pressure	2-4 bar		
Spray Angle	90° (+5%-10%)	120° (+5% -30%)	
K-value	40,0 +20% /-0% (l/min/√bar)		
Connection	1/2" NPT male		
Nozzle material			
Standard	Titanium*	Grade 2	0,056 Kg
	Naval Brass*	CuZn35Ni	0,102 Kg
Options. Min. qty may apply	Stainless Steel	AISI 316	0,096 Kg
	Super Duplex	25Cr	0,096 Kg
Strainer material			
Standard	Stainless Steel*	AISI 316	
Optional	Titanium*	Grade 2	

Dimension



NOTE: Minimum quantity may apply when ordering products with optional material and connections such as BSP or BSPT

Only Naval Brass and Titanium nozzle w/stainless steel strainer are FM Approved

Contact

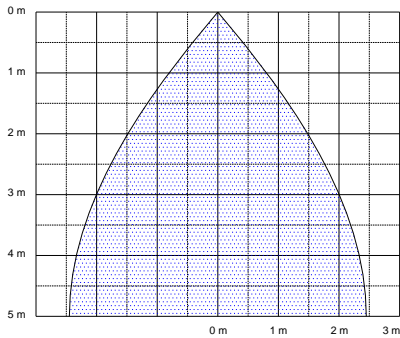
For further information on FIREKILL™ products, please contact our sales department at Sales@vidfirekill.com

Installation

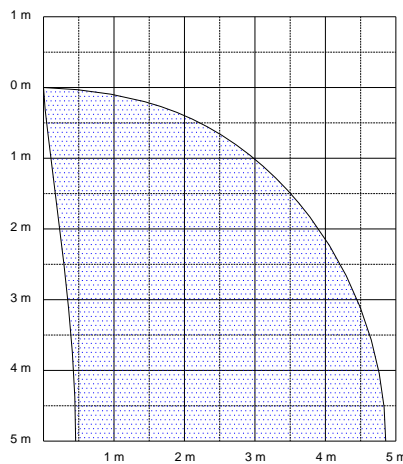
Piping should be flushed prior to installation of the nozzles. The nozzles can be used for both fresh water and sea water applications.

Spray pattern at 2-4 Model MS40-90

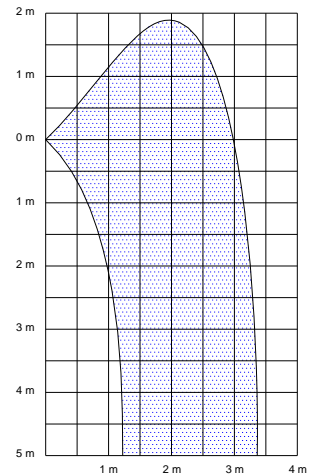
Vertical



Angled 45 dg

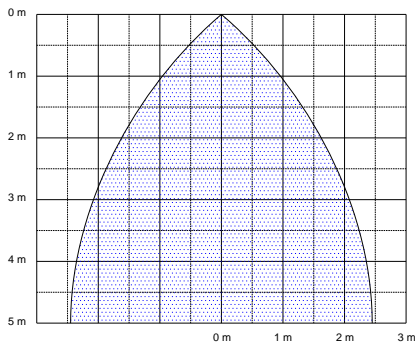


Horizontal

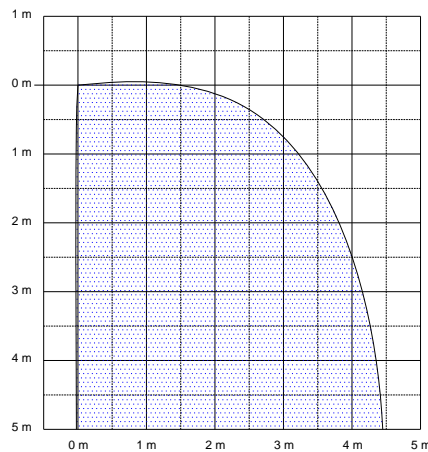


Spray pattern at 2-4 Model MS40-120

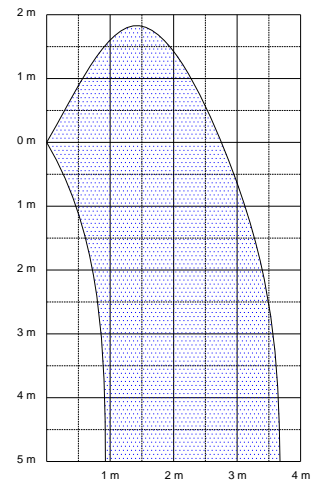
Vertical



Angled 45 dg



Horizontal



VID Fire-Kill APS is not responsible for any errors or omissions, or for the results obtained from the use of this information. All information in this document is provided "as is", with no guarantee of completeness, accuracy, functionality, timeliness or of the results obtained from the use of this information.