

Description

The FIRE KILL™ Low Pressure Water Mist Attic System Model KIP is a system utilizing very small open water mist nozzles integrated in stainless steel pipes, designed specifically for the protection of attics and other such large rooms with sloped ceilings. The system is a deluge system and is designed to cover floors underneath sloped ceilings up to 140 degrees. The system is designed to cover up to 6,5m horizontally to both sides from the installation point only using 7 bar water pressure. Depending on the geometrics of the attic in some cases even larger coverage to each side can be achieved. If needed, please contact VID Fire-Kill for support. The system is supplied with 12 open nozzles, 6 to each side, and a 6 meter length of stainless steel pipe, with 12 prefabricated installation holes for the 12 small nozzles to be connected directly into the pipe with a spacing on the pipe of 0,5 meter. The design saves cost on fittings as well as reduces the risk of getting impurities into the pipe when installing the system.



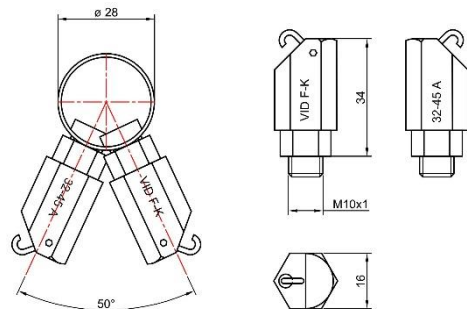
Technical data

General Description	
Minimum water pressure (bar)	7
Maximum working pressure (bar)	16
K-factor 6m pipe (metric (l/t/√bar))	51,6
Flow 6m pipe (L/min)	103,2
Drop size	DN90 < 300 μm
Application	
Coverage Area from center of installation	6,5m to each side
Installation height	250-300mm below ceiling
Max ceiling angle	70°
System Stats & Dimensions	
Standard Pipes	6m AISI316L ø28x1.2mm with open ends for press fitting connections. 12 installation holes each with M10x1mm female thread.
Standard nozzles	12 x 32-45A nozzles with M10x1mm male thread.
Hydraulic system	
Water density	1.75 l/min/m ²
Design area and system operation time	Minimum 2 zones each minimum 6m long, and minimum 30 min operation time.
Related products	
Nozzle Extensions (For hidden applications)	Custom length & ø12x1.5 mm
Zone Control valve	Model C-EL
Flame detector	Model Deflametec
Filter	Model F

Approvals

The Kip System is an extension of the well tested VID Fire-kill Model APS systems designed to protect atriums and other such applications, which has been tested in accordance with DFL TM 70111-04, developed in accordance with CEN/TS 14972, appendix B.

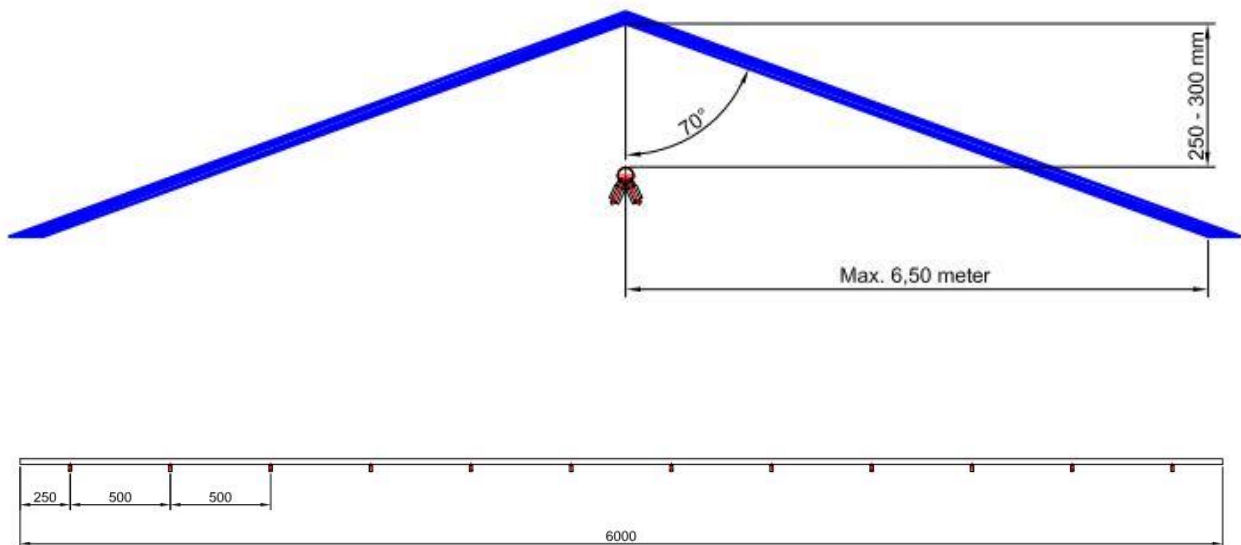
Dimensions



Installation

As the KIP system is a deluge system it is designed to operate several nozzles at one time. The floor area should therefore be divided up into the zones needed, and for each zone one length of the KIP System should be installed. The length of the system will depend on the specified attic zone length.

For every zone one control valve should be installed between the pump system and the KIP pipe system to open for water to flow into the KIP system. To activate the system a double knock detection system should be used. One detector to localize the fire and one extra to confirm the fire exists. More information regarding detection systems and control valves can be supplied on request.



Caution

The Atrium System consists of fragile components and should be handled with care as not to compromise any of the components.

Dropped or otherwise damaged nozzles should not be installed.

Contact

For further information on FIRE KILL™ products, please contact our sales department at Sales@vidfirekill.com

VID Fire-Kill APS is not responsible for any errors or omissions, or for the results obtained from the use of this information. All information in this document is provided "as is", with no guarantee of completeness, accuracy, functionality, timeliness or of the results obtained from the use of this information.